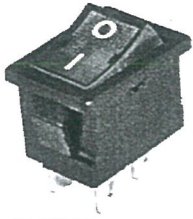


THIS INFORMATION IS CONFIDENTIAL AND PROPRIETARY TO CW INDUSTRIES INCORPORATED AND ITS AFFILIATES. IT MAY NOT BE DISCLOSED TO ANYONE OTHER THAN CW INDUSTRIES PERSONNEL, WITHOUT WRITTEN AUTHORIZATION FROM CW INDUSTRIES INCORPORATED, SOUTHAMPTON, PENNSYLVANIA, USA.

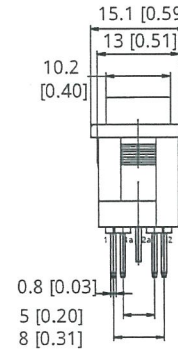
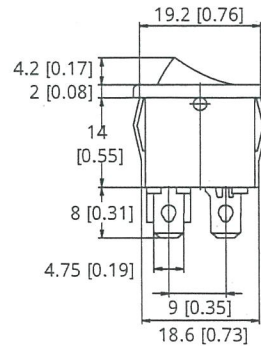
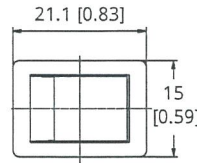


R9 Miniature Rocker Switches

DIMENSIONS IN INCHES (MILLIMETERS)
DO NOT SCALE DRAWING

Dwg. No. **R9 SERIES SWITCH**

REVISIONS	1 Updated & revised. F.W. 7/28/21



Specification:

Electrical Rating :12A 125VAC 6A 250VAC (UL)
4(1)A 250VAC (VDE)
Mechanical life: Over 30000 cycles
Electrical life: Over 10000 cycles
Contact resistance: <20mΩ
Insulation resistance: >1000MΩ
High voltage resistance: >1500VAC 1 min.
Ambient temperature: Terminal side -20 to +85°C
Actuating side- 20 to +55°C
Atmospheric humidity: Max.85%
Actuating force: 4 to 8N(depends on different switch function)
Flammability: UL94V-2
Storage temperature: -30 to +80°C Max
Temperature rise at the terminal: Max 30°C (UL1054)
Soldering of terminal: Max 350°C 3s

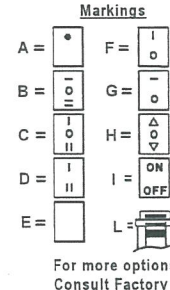
Materials:

Housing: PA 66
Rocker: PC & PA66
Contact: Silver alloy
Terminal: Brass silver plated
Lamp: Neon lamp, Tungsten lamp, LED
Moving Contact: Copper alloy

R9	1	2	K	K	E	T	O	O	F	1
Series	Switch Function	Rating	Housing Color	Actuator Color	Marking	Terminal	Lamp Voltage	Lamp Type	Safety Approval	
Series	2	6A 250V AC 12A 125V AC 4(1)A 250V AC	G Gray W White K Black O Orange R Red B Blue Y Yellow(III.) M Green(III.) D Red(III.)	O O O O O O O O O	R R Type T T Type L L Type See option of marking	0 No Lamp N Transparent Neon Lamp F Green Fluorescent Neon Lamp B Blue Fluorescent Neon Lamp	0 No Lamp 1 125V AC 2 250V AC	0 No Lamp N Transparent Neon Lamp F Green Fluorescent Neon Lamp B Blue Fluorescent Neon Lamp	F 4 Safety Approvals E None Approval	1 ON-OFF (SPST) 9 ON-OFF (SPST-With Lamp) D ON-OFF (DPST) Y ON-OFF (DPST-With Lamp)
										2 No Barrier Between Terminals 1 With One Barrier Between Terminals 10 With Cross Barrier Between Terminals

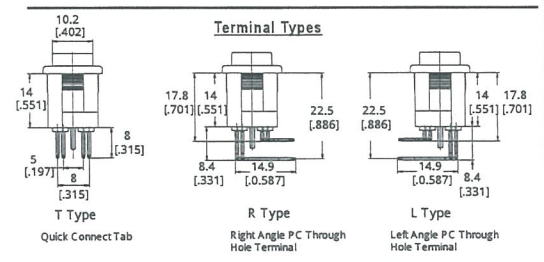
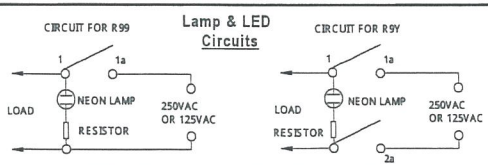
Switch Function

Item Number:	Poles & Throws	Rocker Position		
		ON	NONE	OFF
R91	SPST	ON	NONE	OFF
R99	SPST (WITH LAMP)	ON	NONE	OFF
R9D	DPST	ON	NONE	OFF
R9Y	DPST (WITH LAMP)	ON	NONE	OFF
R9I	Indicator			
R9B	The block sealed on the panel			



Panel Cut Out

Z	Y	X
0.7-1.25	12.8-12.9	19.2-19.3
1.25-2.0	12.8-12.9	19.3-19.4
2.0-3.0	12.8-12.9	19.5-19.6



OSLO SWITCH
CW Industries
A Unit of Electro Switch Corp.

TOLERANCES UNLESS OTHERWISE SPECIFIED

2 Place Decimal ± .010	METRIC
3 Place Decimal ± .005	1 Place Dec ± .25mm
Angles ± 1°	2 Place Dec ± .13mm

Made for: CW/OSLO
Drawn by: DW 7/28/21

Checked by: *[Signature]* 7/29/21
Approval: *[Signature]* 7/29/21

Title: **R9 MINIATURE ROCKER SWITCH**

Division: **SWITCH**

Dwg. No. **R9 SERIES SWITCH**

MASTER